



# PROFILE

PERFORMANCE

## INSTALL GUIDE

## SMOKE RINGS

**WARNING:** By reading this document, I agree it is only to be used as an educational guide. Profile Performance nor its distributors make guarantees on any finished results, nor are they to be held responsible for any damage, misuse, or personal injuries. Use at your own risk. If you are unable to clearly understand and adapt the information below, professional installation is recommended.

### WHAT'S INCLUDED



2 x SMOKE RINGS

### TOOLS REQUIRED



DRILL



1MM DRILL BIT



4MM DRILL BIT



BEADING WIRE OR FISHING LINE



NEEDLENOSE PLIERS

### RECOMMENDED PROTECTION:



LATEX GLOVES

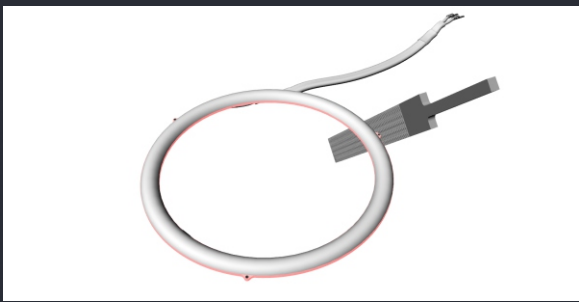


PROTECTIVE EYEWEAR

### ASSEMBLY PROCESS

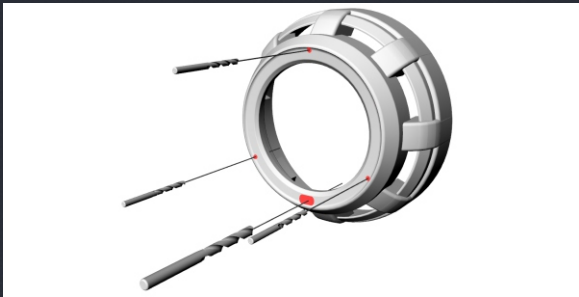
**NOTE:** Smoke Rings are designed to fit Profile Pivot or Prism halos and are model and size-specific. Other brands and models of halos may fit, but it is not guaranteed.





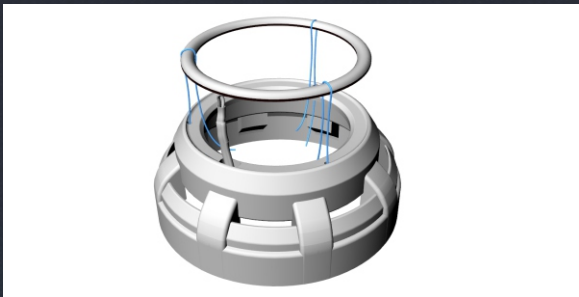
### 1. PREPARE THE HALOS

Note the wire orientation of the halos, then de-pin the connectors. File off the three mounting tabs from each halo and sand the edge smooth.



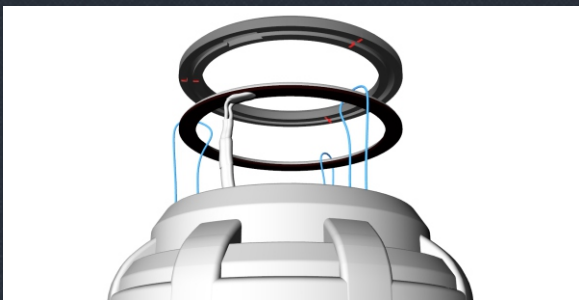
### 2. DRILL THE SHROUDS

Mark a location for the wires to pass through the shrouds and three mounting points for the securing wire to pass through. Drill the three mounting points with a 1mm drill bit and the larger wire opening with a 4mm drill bit.



### 3. ROUTE THE WIRING

Pass the halo wiring through the larger opening, and the securing wire (beading or fishing line) over the face of the halos and routed as indicated. NOTE: Do not tighten any wiring yet!



### 4. MARK THE WIRING LOCATION

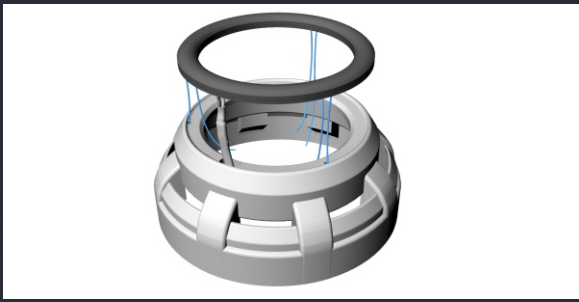
On the backside of the Smoke Rings, mark the location of the three securing wires so as to modify the Smoke Rings to allow for sufficient clearance.



### 5. MODIFY THE SMOKE RINGS

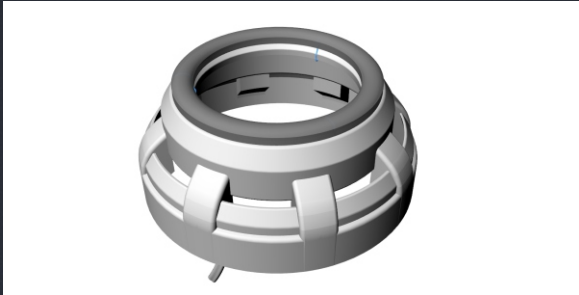
Notch the Smoke Rings at the locations indicated in Step 4.





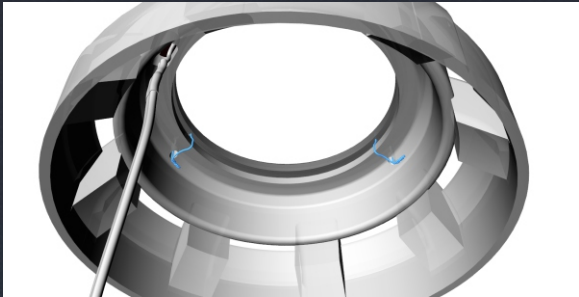
## 6. FIT THE SMOKE RINGS

Match the orientation of the securing wire notches from Step 5, then fit the Smoke Rings over the halo and fully wrapped around the back edge of the halo.



## 7. TIGHTEN THE SECURING WIRES

Slowly and evenly, pull the securing wire from the back of the shroud to tightly fit the Smoke Ring-covered halo against the face of the shroud.



## 8. SECURE THE WIRING

Once snug, twist the securing wire tightly with needlenose pliers and bend out of the way. You can now fit the connector back on the halo wires in the same orientation as in Step 1.

- END -